

55	90° elbow	Φ219x6	PN=0.6MPa	sets	5x2	Stainless steel
54	Stainless steel pipe	Φ219x6	PN=0.6MPa	m	20.6x2	
53	90° elbow	Φ108x4	PN=0.6MPa	sets	1x2	Stainless steel
52	Stainless steel pipe	Φ108x4	PN=0.6MPa	m	16.5	
51	Three-way pipe	DN100DN100DN80	PN=1.6MPa	sets	2x2	Stainless steel
50	90° elbow	Φ89x4	PN=1.6MPa	sets	2x2	Q235
49	Steel plate	Φ200x10		sets	1x2	Q235
48	90° elbow	Φ219x6	PN=0.6MPa	sets	2x2	Q235
47	Stainless steel pipe	Φ108x4	PN=0.6MPa	m	1.2x2	
46	Flange	DN100	PN=0.6MPa	sets	1x2	Q235
45	Three-way pipe	DN200DN200DN100	PN=0.6MPa	sets	1x2	Q235
44	Three-way pipe	DN200	PN=0.6MPa	sets	2x2	Q235
43	Galvanized stainless steel pipe	Φ219x6	PN=0.6MPa	m	4.6x2	
42	Flange	DN200	PN=0.6MPa	sets	6x2	Q235
41	Stainless steel pipe	Φ32x3	PN=1.6MPa	m	2.3x4	
40	90° elbow	Φ32x3	PN=1.6MPa	sets	2x4	Stainless steel
39	Flange	DN25	PN=1.6MPa	sets	1x4	Q235
38	Motor driven valve	DN25	PN=1.6MPa	sets	1x4	
37	Galvanized stainless steel pipe	Φ57x3.5	PN=1.6MPa	m	1.0x4	
36	Electromagnetic valve	DN50	PN=0.6MPa	sets	1x4	
35	Gate valve	DN50	PN=1.6MPa	sets	2x4	
34	Flange	DN50	PN=1.6MPa	sets	3x4	Q235
33	Thermometer		0~100 celcius degree	sets	1x2	
32	Gate valve	DN200	PN=0.6MPa	sets	1x4	
31	Flange	DN200	PN=0.6MPa	sets	2x4	Q235
30	Stainless steel pipe	Φ89x4.5	PN=1.6MPa	m	0.9x4	
29	Flange	DN80	PN=1.6MPa	sets	2x4	Q235
28	Gate valve	DN80	PN=1.6MPa	sets	1x4	
27	Motor driven valve	DN80	PN=0.6MPa	sets	1x4	Supply with NO.2
26	Different-diameter pipe	DN250/DN200	PN=1.0MPa	sets	4x2	Q235
25	Motor driven gate valve	DN200	PN=0.6MPa	sets	1x4	
24	Three way pipe	DN200	PN=0.6MPa	sets	1x4	Q235
23	Gate valve	DN200	PN=0.6MPa	sets	2x4	
22	Check valve	DN200	PN=0.6MPa	sets	1x4	
21	Galvanized stainless steel pipe	Φ219x6	PN=0.6MPa	m	3.7x2	
20	Flange	DN200	PN=0.6MPa	sets	5x4	Q235
19	Three way valve	DN15	PN=0.6MPa	sets	5x2	
18	Pressure dial meter		PN=1.0MPa	sets	5x2	
17	Gate valve	DN200	PN=0.6MPa	sets	1x4	
16	Flange	DN200	PN=0.6MPa	sets	2x4	Q235
15	Stainless steel pipe	Φ219x6	PN=0.6MPa	m	1.3x4	
14	90° elbow	Φ219x6	PN=0.6MPa	sets	2x4	Stainless steel
13	Movable joint	Φ21.3x2.8	PN=0.6MPa	sets	1x4	Supply by employer
12	Thread gate valve	DN15	PN=0.6MPa	sets	1x4	
11	90° elbow	DN15	PN=0.6MPa	sets	2x4	Stainless steel
10	Stainless steel pipe	Φ21.3x2.8	PN=0.6MPa	m	2x4	
9	Stainless steel pipe	Φ219x6	PN=0.6MPa	m	114.5	
8	90° elbow	Φ219x6	PN=0.6MPa	sets	3x4	Stainless steel
7	Round steel	Φ8		m	3.2x4	Q235
6	Different-diameter pipe	DN300/DN200	PN=0.6MPa	sets	2x2	Stainless steel
5	Steel plate	500x500x10		sets	2x2	Q235
4	Oil cooler	LGS 80.65.195		sets	1x2	Supply by ALSTOM
3	Hydro cyclon strainer	FZLQ-M-50	Q=24m³/h, PN=0.6MPa	sets	2x2	Supply by ALSTOM
2	Strainer	ZLSG-250C II	Q=530m³/h, PN=0.6MPa	sets	2x2	
1	Water cooling pump	ISW200-400/490	Q=300m³/h, H=54m	sets	2x2	

A

B

C

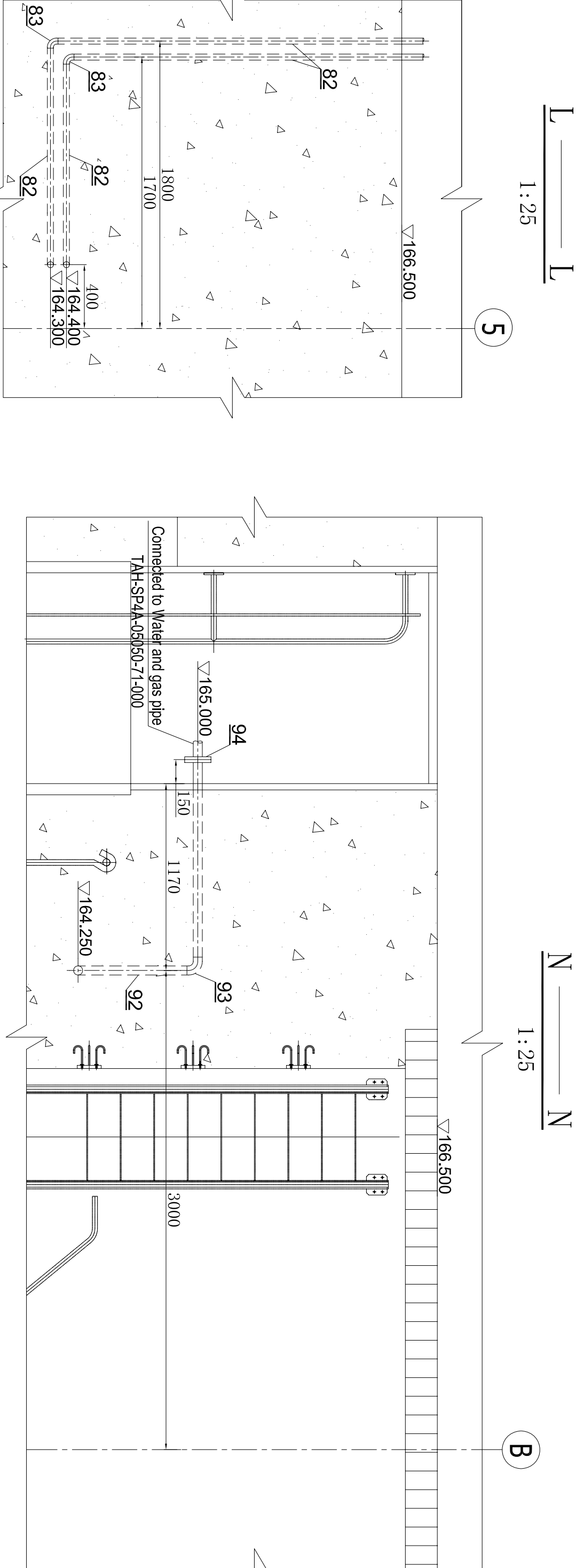
D

E

F

G

H



99	Anchor bolt		sets	12x2	Supply by NO.4	
98	Anchor bolt		sets	4x4	Supply by NO.3	
97	Anchor bolt	M16x220	sets	4x4	Supply by NO.2	
96	Anchor bolt	M24x500	sets	4x4	Supply by NO.1	
95	30° elbow	Φ57x3.5	PN=0.6MPa	sets	1x2	Stainless steel
94	Flange	DN50	PN=0.6MPa	sets	1x2	Q235
93	90° elbow	Φ219x6	PN=0.6MPa	sets	4x2	Stainless steel
92	Stainless steel pipe	Φ57x3.5	PN=0.6MPa	m	55.0	
91	Flange	DN200	PN=0.6MPa	sets	2x2	Q235
90	45° elbow	Φ219x6	PN=0.6MPa	sets	6	Stainless steel
89	Stainless steel pipe	Φ219x6	PN=0.6MPa	m	127	
88	90° elbow	Φ219x6	PN=0.6MPa	sets	12	Stainless steel
87	Flow meter with contact	DN32	PN=0.6MPa	sets	1x2	
86	Thermometer		0~100 celcius degree	sets	1x2	
85	Flange	DN32	PN=0.6MPa	sets	2x2	Q235
84	Gate valve	DN32	PN=0.6MPa	sets	1x2	
83	90° elbow	Φ38x3	PN=0.6MPa	sets	13x2	Stainless steel
82	Stainless steel pipe	Φ38x3	PN=0.6MPa	m	103.6	

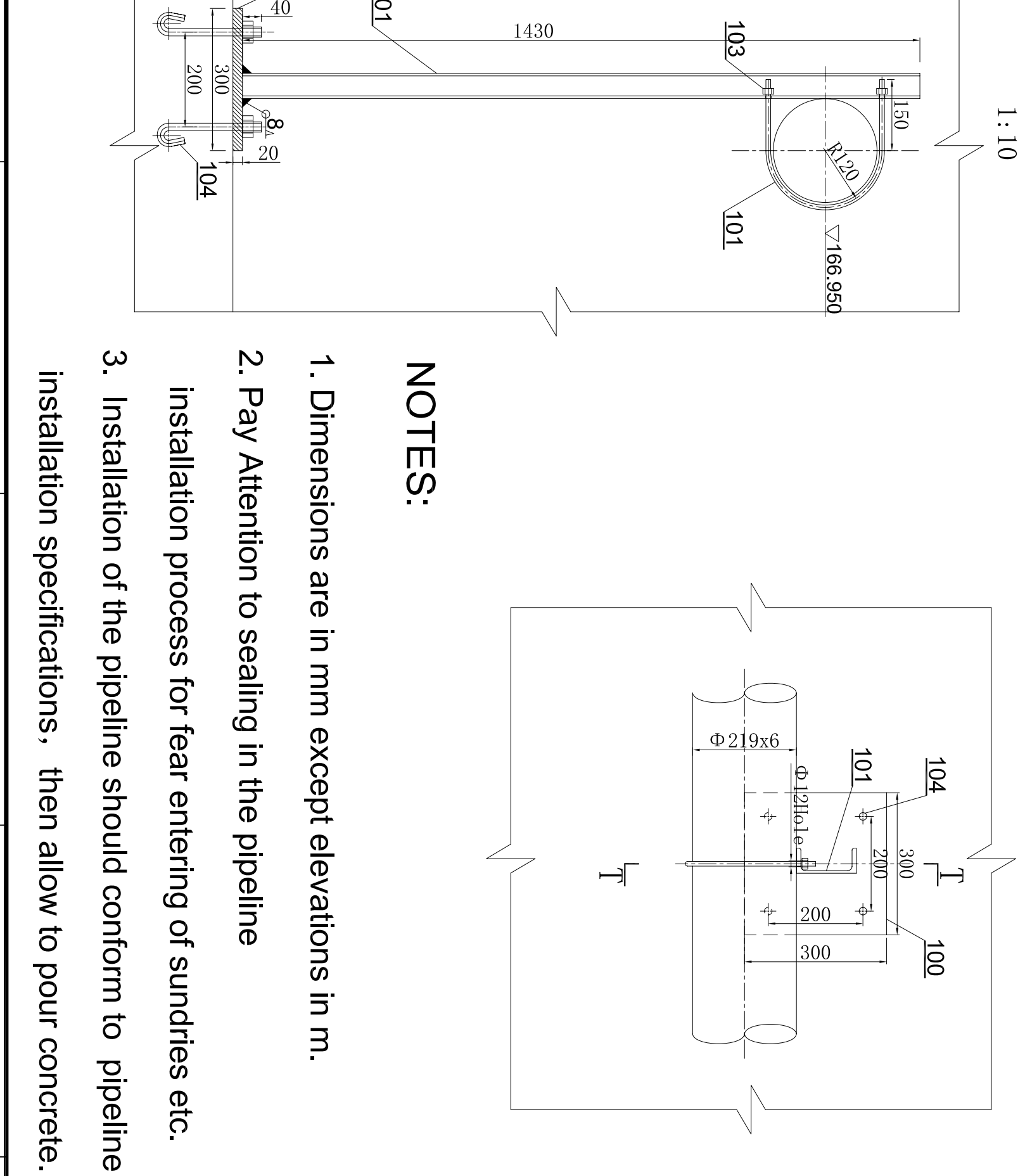
55	90° elbow	Φ219x6	PN=0.6MPa	sets	5x2	Stainless steel
54	Stainless steel pipe	Φ219x6	PN=0.6MPa	m	20.6x2	
53	90° elbow	Φ108x4	PN=0.6MPa	sets	1x2	Stainless steel
52	Stainless steel pipe	Φ108x4	PN=0.6MPa	m	16.5	
51	Three-way pipe	DN100DN100DN80	PN=1.6MPa	sets	2x2	Stainless steel
50	90° elbow	Φ89x4	PN=1.6MPa	sets	2x2	Q235
49	Steel plate	Φ200x10		sets	1x2	Q235
48	90° elbow	Φ219x6	PN=0.6MPa	sets	2x2	Q235
47	Stainless steel pipe	Φ108x4	PN=0.6MPa	m	1.2x2	
46	Flange	DN100	PN=0.6MPa	sets	1x2	Q235
45	Three-way pipe	DN200DN200DN100	PN=0.6MPa	sets	1x2	Q235
44	Three-way pipe	DN200	PN=0.6MPa	sets	2x2	Q235
43	Galvanized stainless steel pipe	Φ219x6	PN=0.6MPa	m	4.6x2	
42	Flange	DN200	PN=0.6MPa	sets	6x2	Q235
41	Stainless steel pipe	Φ32x3	PN=1.6MPa	m	2.3x4	
40	90° elbow	Φ32x3	PN=1.6MPa	sets	2x4	Stainless steel
39	Flange	DN25	PN=1.6MPa	sets	1x4	Q235
38	Motor driven valve	DN25	PN=1.6MPa	sets	1x4	
37	Galvanized stainless steel pipe	Φ57x3.5	PN=1.6MPa	m	1.0x4	
36	Electromagnetic valve	DN50	PN=0.6MPa	sets	1x4	
35	Gate valve	DN50	PN=1.6MPa	sets	2x4	
34	Flange	DN50	PN=1.6MPa	sets	3x4	Q235
33	Thermometer		0~100 celcius degree	sets	1x2	
32	Gate valve	DN200	PN=0.6MPa	sets	1x4	
31	Flange	DN200	PN=0.6MPa	sets	2x4	Q235
30	Stainless steel pipe	Φ89x4.5	PN=1.6MPa	m	0.9x4	
29	Flange	DN80	PN=1.6MPa	sets	2x4	Q235
28	Gate valve	DN80	PN=1.6MPa	sets	1x4	
27	Motor driven valve	DN80	PN=0.6MPa	sets	1x4	Supply with NO.2
26	Different-diameter pipe	DN250/DN200	PN=1.0MPa	sets	4x2	Q235
25	Motor driven gate valve	DN200	PN=0.6MPa	sets	1x4	
24	Three way pipe	DN200	PN=0.6MPa	sets	1x4	Q235
23	Gate valve	DN200	PN=0.6MPa	sets	2x4	
22	Check valve	DN200	PN=0.6MPa	sets	1x4	
21	Galvanized stainless steel pipe	Φ219x6	PN=0.6MPa	m	3.7x2	
20	Flange	DN200	PN=0.6MPa	sets	5x4	Q235
19	Three way valve	DN15	PN=0.6MPa	sets	5x2	
18	Pressure dial meter		PN=1.0MPa	sets	5x2	
17	Gate valve	DN200	PN=0.6MPa	sets	1x4	
16	Flange	DN200	PN=0.6MPa	sets	2x4	Q235
15	Stainless steel pipe	Φ219x6	PN=0.6MPa	m	1.3x4	
14	90° elbow	Φ219x6	PN=0.6MPa	sets	2x4	Stainless steel
13	Movable joint	Φ21.3x2.8	PN=0.6MPa	sets	1x4	Supply by employer
12	Thread gate valve	DN15	PN=0.6MPa	sets	1x4	
11	90° elbow	DN15	PN=0.6MPa	sets	2x4	Stainless steel
10	Stainless steel pipe	Φ21.3x2.8	PN=0.6MPa	m	2x4	
9	Stainless steel pipe	Φ219x6	PN=0.6MPa	m	114.5	
8	90° elbow	Φ219x6	PN=0.6MPa	sets	3x4	Stainless steel
7	Round steel	Φ8		m	3.2x4	Q235
6	Different-diameter pipe	DN300/DN200	PN=0.6MPa	sets	2x2	Stainless steel
5	Steel plate	500x500x10		sets	2x2	Q235
4	Oil cooler	LGS 80.65.195		sets	1x2	Supply by ALSTOM
3	Hydro cyclon strainer	FZLQ-M-50	Q=24m³/h, PN=0.6MPa	sets	2x2	Supply by ALSTOM
2	Strainer	ZLSG-250C II	Q=530m³/h, PN=0.6MPa	sets	2x2	
1	Water cooling pump	ISW200-400/490	Q=300m³/h, H=54m	sets	2x2	

E

F

G

H



113	90° elbow	Φ108x4	PN=0.6MPa	sets	4x2	Stainless steel
112	Galvanized stainless steel pipe	Φ219x6	PN=0.6MPa	m	9.5x2	
111	90° elbow	Φ219x6	PN=0.6MPa	sets	1x2	Stainless steel
110	Galvanized stainless steel pipe	Φ219x6	PN=0.6MPa	m	0.8x2	
109	Stainless steel pipe	Φ57x3.5	PN=1.6MPa	m	1.2x2	
108	90° elbow	DN50	PN=1.6MPa	sets	1x2	Stainless steel
107	90° elbow	Φ219x6	PN=0.6MPa	sets	2x2	Stainless steel
106	Galvanized stainless steel pipe	Φ219x6	PN=0.6MPa	m	0.3x4	
105	90° elbow	Φ219x6	PN=0.6MPa	sets	2x4	Q235
104	Anchor bolt	M10x220		m	4x4	Q235
103	Nut	M10		sets	6x4	Q235
102	Round steel	Φ10		m	0.7x4	Q235
101	U-steel	∟12.6		m	1.43x4	
100	Steel plate	300x300x20		sets	1x4	Q235

68	Gate valve	DN200	PN=0.6MPa	sets	5x2	Q235
67	Stainless steel pipe	Φ219x6	PN=0.6MPa	m	6.9x2	
66	Flange	DN200	PN=0.6MPa	sets	1x2	Q235
65	Flow meter with contact	DN50	PN=1.0MPa	sets	1x2	
64	Three way valve	DN15	PN=1.0MPa	sets	1x2	
63	Pressure dial meter	DN50	PN=1.6MPa	sets	1x2	
62	Gate valve	DN50	PN=1.6MPa	sets	2x2	Q235
61	Three-way pipe	DN50	PN=1.6MPa	sets	1x2	
60	Galvanized seamless steel pipe	Φ57x3.5	PN=1.6MPa	m	2.1x2	
59	Flange	DN50	PN=1.6MPa	sets	5x2	Q235
58	90° elbow	DN50	PN=1.6MPa	sets	2x2	Q235
57	Check valve	DN200	PN=0.6MPa	sets	1x2	
56	Flange	DN200	PN=0.6MPa	sets	1x2	Q235
NO.	Name	Type	Size	Units	QTY	Remarks

Equipment and materials tables						
--------------------------------	--	--	--	--	--	--